

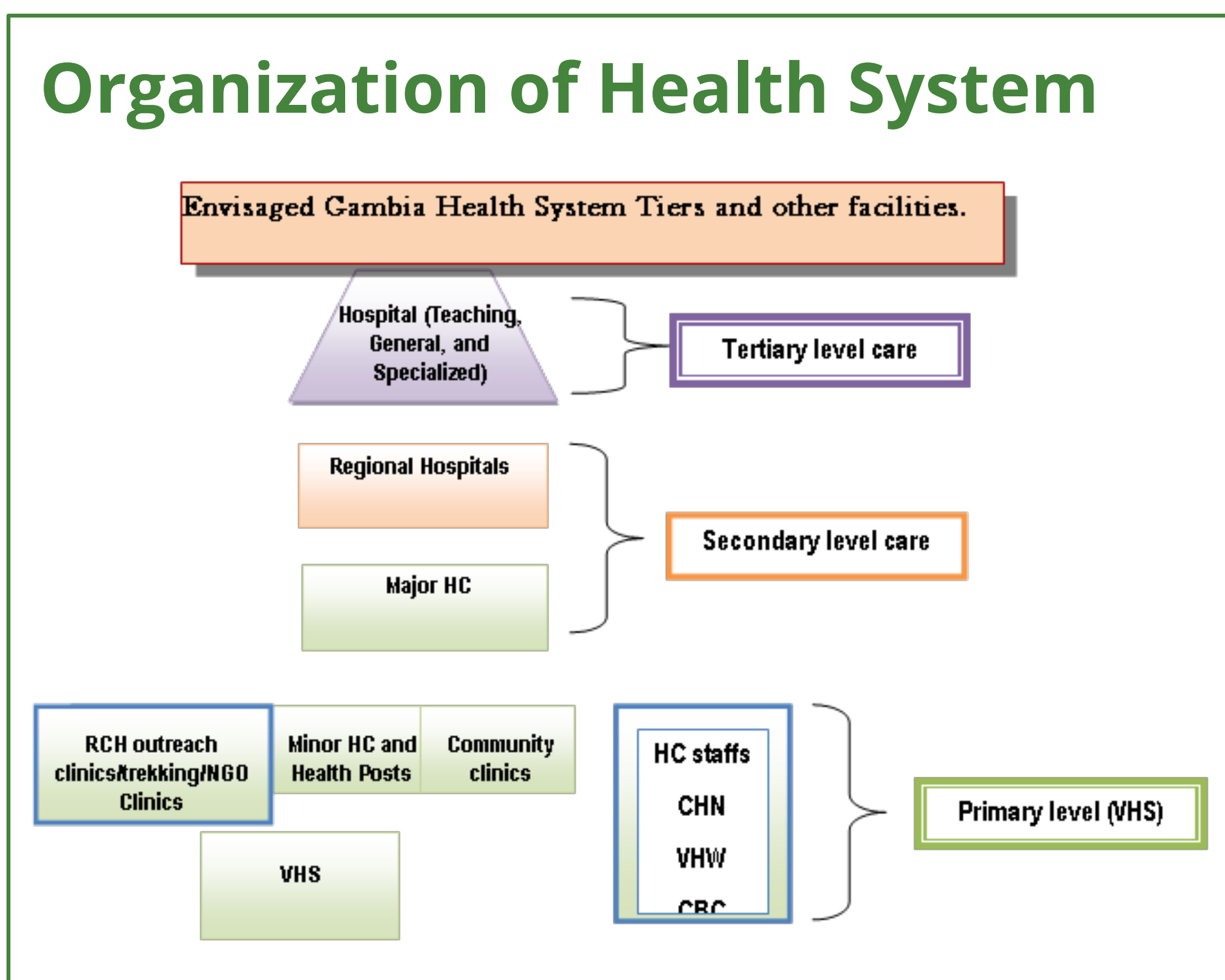
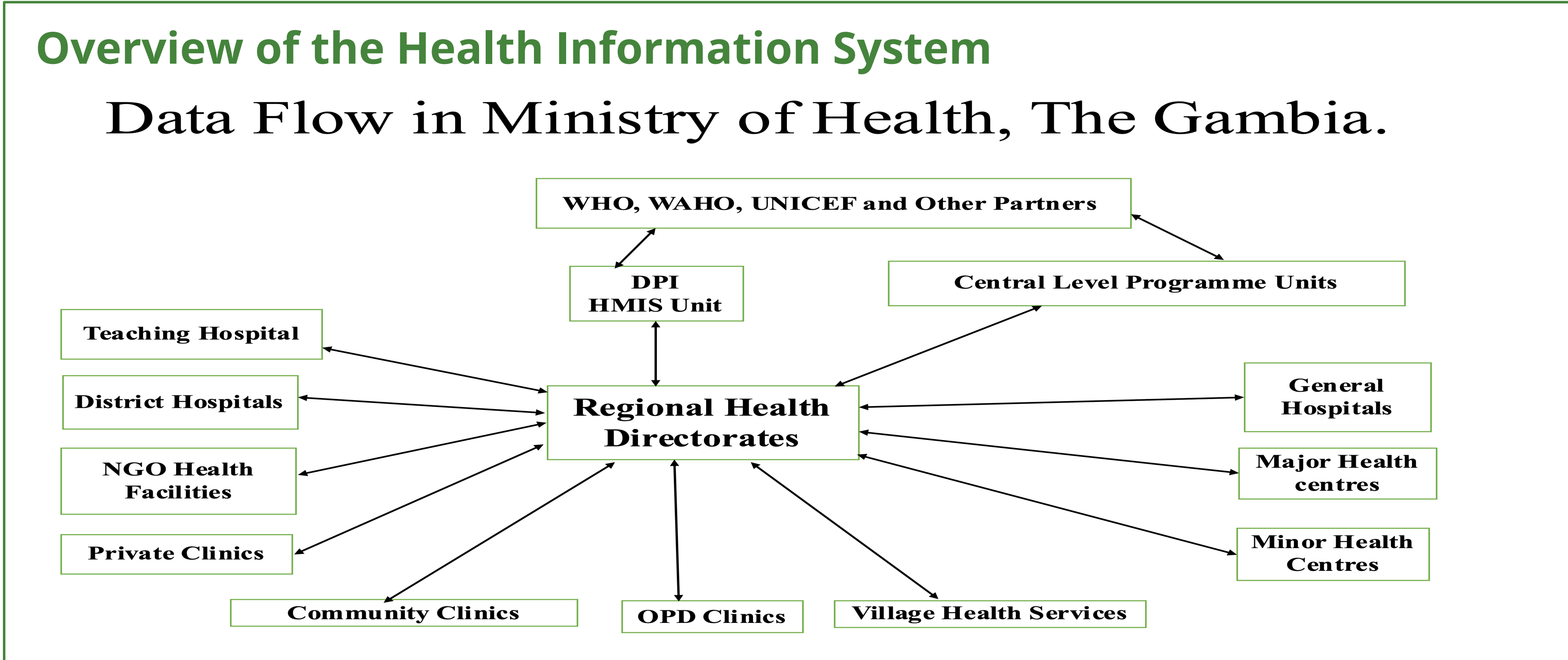


MR ABDOULIE BAH, HMIS MANAGER, MR EBRIMA JOBE HMIS OFFICER, MR EBRIMA NASSO HMIS, OFFICER Mrs. FATOU SOWE HMIS OFFICE AND MR BAKARY T BARROW HMIS OFFICER

Country Overview

use selected indicators, e.g.:

Population	2,527,251 MOH Prj.
GDP/Capita	877 USD
THE/Capita	25.07 USD 2019 NHA
Public health spending %GGE	32.54%
HIS spending %Public spending	NA
HIS spending %THE	NA



Status of HIS (use SCORE and other reports)

Surveys	CRVS	Optimizing health service data	Review of progress and performance	Enabling data use for policy and action
Annual data quality review survey for 2022 at the health facilities, Regional Directorates and Programs	Mass registration of birth across the country	Direct reporting of service data at the Hospitals	75.6% and 84.2% Timeliness and Completeness of data	Training of health facilities, regional offices and programs on data use
Client satisfaction survey for 2022 and NHA	Birth and Death registration at all the health facilities	Gathered and uploaded material resources in health observatory	Annual review survey at the health facilities, regional offices and programs	

- ### Why HDC?
- Improve accountability and production of quality health data to inform decision
 - Networking with stakeholders to learn best practices to improve HIS
 - Facilitate data access and data use
 - To develop a data integration plan
 - Integrate all existing and plan systems into DHIS2
 - Reconfigure and expand DHIS2 functions

- ### Success
- Build the capacity of health staff on data analytics at all levels
 - Established one main data reporting system (DHIS2)
 - Improved data analysis and data use at all levels
 - Improved data quality at all levels
 - Implement The Gambia health observatory

- ### Bottlenecks and challenges
- Inadequate capacity (Statistical software, Advance DHIS2, Data management and use)
 - Parallel system of reporting health data
 - Lack of clear-cut HIS structural organogram
 - Lack of supportive supervision at the health facility and Regional Directorate
 - Lack of capacity to implement The Gambia health observatory
 - Lack of mobility for the HMIS office

- ### Lessons Learned and Recommendations
- Knowledge and skills in data analysis and use enhance data-driven decision-making
 - Support study tours/exchange visits among member countries to learn and share best practices

- ### Partners
- Partners supporting HIS in the country
- WHO
 - Global Fund
 - UNICEF
 - World Bank

- ### Top 5 HIS priorities for 2024-25
1. Implement mechanism to facilitate data access and data use e.g., through National and Regional Health Observatories (HQ MFI, AFRO)
 2. Delivery for Impact approach for maternal mortality and other national targets.
 3. Innovation engages Digital Health colleagues in the Science Division to support the development of the National Data Centre and other areas of interest
 4. Financing and support for HIS in the Region for HIS through partners
 5. HIS and surveys - DHIS2 & HHFA
 6. Review HIS Policy & Strategic Policy

- ### Actionable next steps
- Provide continuous technical support and mentorship to improve on the above-mentioned priorities/challenges
 - Need for mobility for the HIS staff for supportive supervision and monitoring
 - Technical need to implement health observatory
 - Continues capacity building of HIS staff across the country